

# Berberine HCl Overview

## Why We Need It

Berberine is a bioactive alkaloid found in several medicinal plants. When paired with hydrochloride (HCl), it becomes a potent supplement that supports metabolic health, blood sugar regulation, and cardiovascular function. It activates AMPK, a key enzyme involved in cellular energy balance.

## Functions in the Body

- Improves insulin sensitivity and reduces fasting blood glucose
- Lowers LDL cholesterol and triglycerides, supports healthy blood pressure
- Exerts antimicrobial effects and improves gut microbiota balance
- Supports metabolic and cardiovascular health through AMPK activation

## Daily Recommended Intake (RDI)

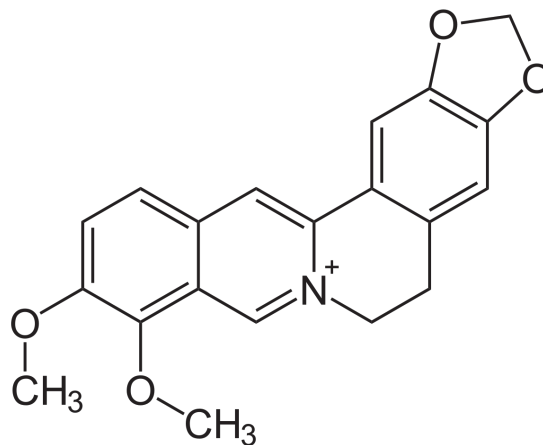
Typical dose: 500 mg 2–3 times daily with meals

Total daily dose: 1,000–1,500 mg

Split dosing due to short half-life (3–4 hours)

## Benefits of Supplementation

- Lowers blood sugar and HbA1c
- Improves cholesterol profile and heart health
- Supports weight management and fat loss
- Reduces inflammation and oxidative stress
- Modulates gut health and combats harmful microbes



## Most Bioavailable Form

Berberine HCl is the most common and well-researched form

Often combined with silymarin, piperine, or phytosomes to enhance absorption

Formulations with bioavailability enhancers reduce GI side effects

**Note:** Berberine is not found in foods and must be supplemented.

## When & How to Take It

- Take 500 mg with meals, 2–3 times daily
- Split dosing maintains stable blood levels
- May be combined with fiber or probiotics to reduce GI effects
- Avoid combining with macrolide antibiotics (e.g., azithromycin)

## Conclusion

Berberine HCl is a clinically supported compound for regulating blood sugar, cholesterol, and inflammation. With effects comparable to pharmaceutical drugs like metformin, it's an effective natural therapy for metabolic and cardiovascular health when taken consistently and with meals.