

GSK-2881078 Overview

Why We Need It

GSK-2881078 is a highly selective, next-generation SARM developed by GlaxoSmithKline for research in treating sarcopenia (age-related muscle loss) and osteoporosis. It is designed to enhance muscle strength and physical function, especially in older adults. Unlike traditional anabolic agents, GSK-2881078 focuses on skeletal muscle and bone, aiming to reduce fall risk and improve mobility without significantly affecting reproductive tissues. It remains investigational and is not FDA-approved for medical use.

Mechanism of Action

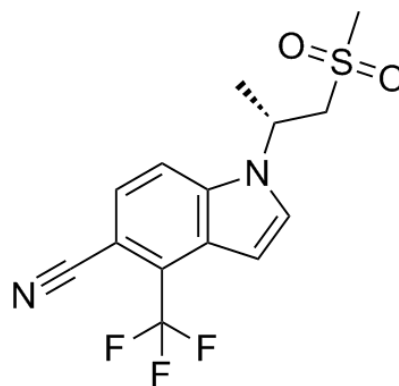
GSK-2881078 selectively binds to androgen receptors (AR) in skeletal muscle and bone tissue, triggering anabolic signaling pathways while avoiding overstimulation of reproductive tissues.

Clinical research suggests it:

- Stimulates muscle protein synthesis via androgen receptor activation.
- Increases bone mineral density through osteogenic pathways.
- Minimizes prostate stimulation, reducing androgenic side effects.
- This makes GSK-2881078 a promising candidate for improving strength, mobility, and skeletal health in aging populations.

Functions and Benefits

- Increases lean muscle mass in older adults
- Improves strength and physical performance
- Enhances bone density and reduces fracture risk
- Minimizes androgenic side effects such as prostate growth
- Supports healthy body composition
- Potential mobility and fall-prevention benefits



Medical-Grade Dosing

Dose: 1–18 mg per day (based on human clinical trial data)

Frequency: Once daily (long half-life allows for single daily dosing)

Cycle Duration: 8–12 weeks (clinical studies typically used 12-week cycles)

Post-Cycle Therapy (PCT): Likely minimal or none required, but hormone monitoring is recommended

Liver Support: Not typically required based on clinical data

Pharmacology and Bioavailability

- Orally bioavailable with favorable dosing frequency
- High selectivity for muscle and bone over reproductive tissues
- Low liver toxicity reported in clinical studies
- Developed by GlaxoSmithKline; research-use only

Administration Guidelines

- Take once daily, preferably with food
- Monitor hormone panels if used beyond clinical research parameters
- Consider muscle strength and bone density assessments during use
- Optional post-cycle hormone monitoring if extended use is performed

Conclusion

GSK-2881078 represents a clinically promising SARM focused on enhancing muscle strength, mobility, and bone density in populations affected by sarcopenia or osteoporosis. Its high selectivity and minimal androgenic side effects make it a leading research candidate in age-related functional decline.

Responsible experimental use requires monitoring and professional oversight, particularly in long-term or high-dose applications.