

RAD-150 (Esterified RAD-140) Overview

Why We Need It

RAD-150, also known as TLB-150 Benzoate, is a chemically esterified version of RAD-140 (Testolone). This modification was designed to extend the compound's half-life, improve stability in the bloodstream, and deliver slower, more sustained anabolic effects. RAD-150 is a newer investigational compound with no FDA-approved uses, marketed strictly for research purposes.

Mechanism of Action

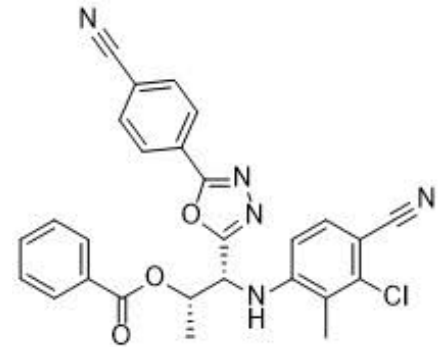
RAD-150 functions similarly to RAD-140 by binding selectively to androgen receptors (AR) in muscle and bone tissue, promoting anabolic activity with minimal stimulation of reproductive tissues.

What sets RAD-150 apart is its esterification:

- Prolongs release into the bloodstream, reducing dosing frequency
- Delivers sustained anabolic effects for longer muscle protein synthesis activation
- Maintains high receptor selectivity, minimizing side effects
- This makes RAD-150 a promising tool for researchers seeking consistent anabolic output over longer periods.

Functions and Benefits

- Enhances lean muscle mass and strength
- Supports longer-lasting anabolic activity due to extended release
- Improves recovery and training performance
- Minimizes water retention and fat gain
- Potentially reduced dosing frequency compared to RAD-140
- Less hormonal fluctuation, supporting a smoother cycle experience



Medical-Grade Dosing

Dose: 10–30 mg per day (mirrors RAD-140, but potentially less frequent dosing)

Frequency: Once daily or every 36–48 hours (experimental)

Cycle Duration: 6–10 weeks

Post-Cycle Therapy (PCT): Strongly recommended; Clomid or Nolvadex advised for HPTA recovery

Liver Support: NAC (600–1,200 mg/day) or TUDCA (250 mg/day) recommended for prolonged cycles

Pharmacology and Bioavailability

- Orally bioavailable with extended half-life due to ester bond
- Highly anabolic, comparable to or exceeding RAD-140 in potency
- Longer systemic duration, potentially reducing suppression variability
- Research-use only, no clinical trials or FDA approval

Administration Guidelines

- Take once daily or every 36–48 hours, preferably with food
- Monitor hormone levels and liver enzymes before, during, and after cycle
- Use PCT to restore testosterone and protect HPTA function
- Consider stacking with liver support and base hormone monitoring

Conclusion

RAD-150 (Esterified RAD-140) is a next-generation SARM offering extended anabolic effects, improved stability, and high muscle-building potential with a potentially smoother hormonal profile. While promising for lean mass research, its high potency and suppression risk call for responsible application, cycle management, and professional oversight in experimental settings.